



CORNERSTONE®
FLOORING



Single Source Solution

Not all floors are the same

Our floors are built to last

Single Source Solution

Not all floors are the same

Our floors are built to last

Cornerstone Flooring

Approaching 33 years of Business

The largest Single Source Manufacturer and Installer of High Performance Resinous Flooring and Wall Systems in North America

5 Year Cornerstone Warranty on Labor & Materials

Single Source Advantage

Our Employees

We do not use Subcontractors

All Cornerstone workers are minimum 10 hour OSHA trained and all Foremen and Project Managers are 30 hour OSHA certified.

Cornerstone owns and operates dozens of trucks/ trailers fully equipped with all equipment necessary to install Resinous Flooring in North America and capable of mobilizing within 24 hours if required.

Antimicrobial Properties

Custom formulated Anti-Microbial Flooring and Wall Solutions. We help our clients stay FDA Compliant.

2



Single Source means

- Custom Formulated Anti-Microbial Flooring and Wall Solutions
- Fully integrated Manufacturing and Distribution
- Experienced Installation
- No Subcontractors



High Standards

From industry research and development innovations, to experience with leading Fortune 500® companies, Cornerstone Flooring is the nation's largest single source manufacturer and installer of high performance resinous flooring.

It's our guiding principal to ensure the highest level of control, consistency, and customer satisfaction. A leader in industrial flooring & polymer flooring systems, our engineers can create custom flooring standards that line up with protocol for your industry.

3

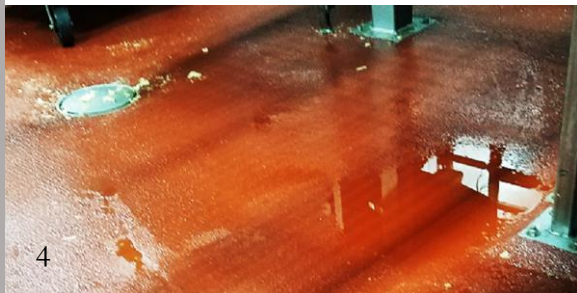
Single Source Solution
Not all floors are the same
Our floors are built to last

Single Source Solution
Not all floors are the same
Our floors are built to last

Common Flooring Problems

We have helped our Clients solve a wide range of flooring problems over the years, including:

- * Failing Floors
- * Ponding Water
- * Peeling Walls
- * Microbial Concerns



4

5

Not all floors are the same
Our floors are built to last

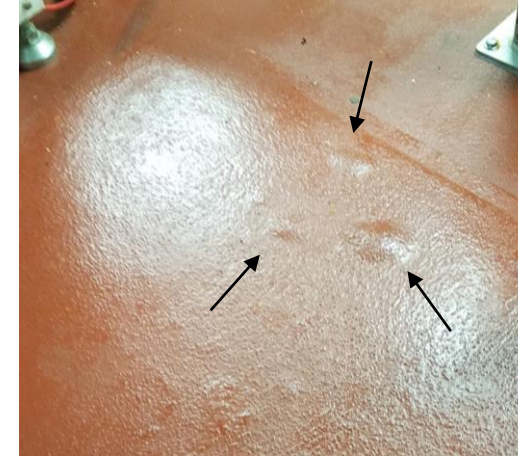
Not all floors are the same
Our floors are built to last

Moisture Vapor Transmission

Moisture Vapor Transmission is a common phenomena that we see in facilities frequently. Environmentally controlling interior spaces, with air conditioning and heat, will create Moisture Vapor Transmission from beneath the concrete slab. When the soil below a facility is moist (high humidity), and the space inside a facility is drier (low humidity), the difference in humidity will cause the moisture from the soil below to pull up through the concrete slab.

When Moisture Vapor Transmission occurs, the concrete slab can become highly Alkaline. High Alkalinity attacks Epoxy Flooring. (See example of high Alkalinity, pH 13+, right.) Evidence of Moisture Vapor Transmission can include bubbling and delamination in Epoxy Flooring. (See examples, right)

Cornerstone recommends installing an Alkaline Resistant Flooring System to combat Moisture Vapor Transmission.



Not all floors are the same
Our floors are built to last

Not all floors are the same
Our floors are built to last

Anti-Microbial Flooring

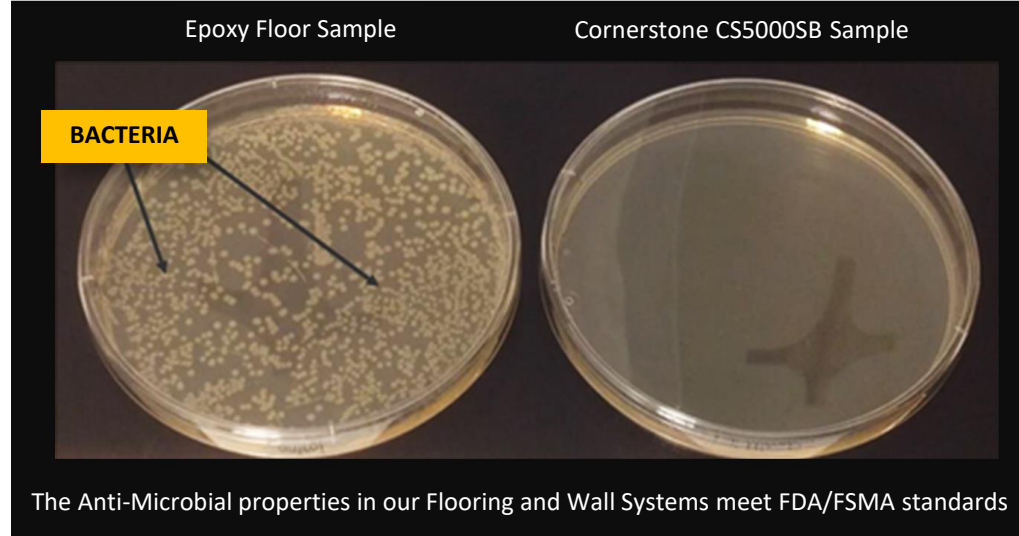
A single source Flooring expert since 1991, Cornerstone Flooring understands the importance not only of floors and walls that look good but comply with The Food Safety and Modernization Act (FSMA and HACCP Certification).

After thousands of installations, food plant visits and audits, Cornerstone Flooring understands the specific needs of floors and walls in a Food Manufacturing Facility.

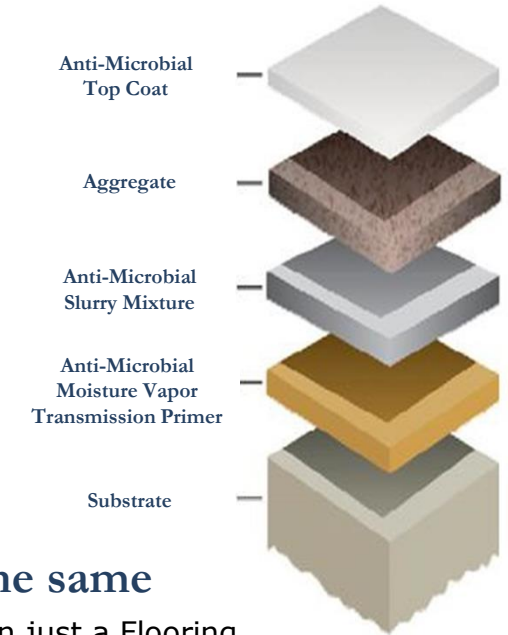
Cornerstone helps clients stay FDA Compliant. Choosing the right Anti-Microbial Flooring and Wall System can help keep your product safe as well as saving maintenance and money.

* Independent 3rd study available, upon request.

While no flooring or wall product negates the need to sanitize, our systems offer a proactive approach to maintaining a sanitary facility.



Cornerstone CS5000SB



Not all floors are built the same

Cornerstone Flooring is more than just a Flooring Installer, we are your Single Source for Walls and Floors.

- We manufacture our proprietary products in-house, for our installers only.
- We design and develop new products based on demand and customer need.
- We provide project evaluation and technical assistance on-site when necessary.

Cornerstone Flooring Systems

BioFloor®



FoodFloor®



VinoFloor®



OfficeFloor®



Flooring Surveys/Audits

Cornerstone Flooring will provide a survey/audit of your existing flooring and walls and provide recommendations for a plan of action for future flooring and wall needs.

Lunch & Learn

Cornerstone Flooring conducts Lunch and Learns to Architectural & Engineering Firms and Corporate Headquarters. Contact us to request a Lunch & Learn at your location.



Cornerstone Plant Visit

The Cornerstone team

A 3-6 person crew trained in FSMA standards

What we need on-site

Camera pass, Access to production areas, Power & Water Source if taking a core (see Coring Procedure Overview).



Our Equipment

Always – PPE

Likely – Coring Machine, Camera, Measuring Equipment, Floor Inspection Equipment, Relevant Documents

Plant Visit Purpose

Utilizing plant illustrations provided by customer, Cornerstone will create a dashboard document and mapping.

Plant floors and walls will be evaluated, measured and photographed. Budget pricing will be provided to allow for future planning.

Coring Procedure Overview

Coring will be completed by trained Cornerstone personnel that will comply with PPE and food safety protocol.

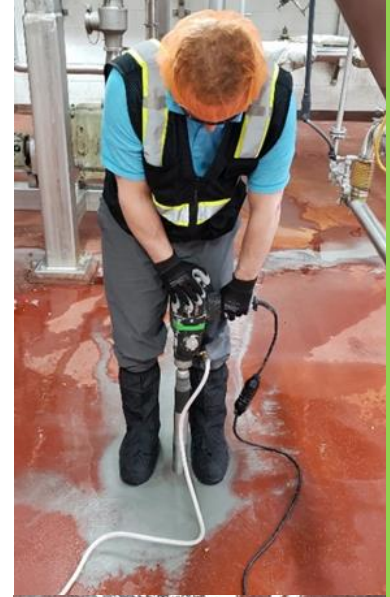
The Cornerstone team will work in conjunction with plant personnel to locate areas that appear to need remediation in order to comply with FSMA Standards.

The Coring Process

The core machine is designed to connect to a water supply to ensure no dust will be created from the coring process. After the core is removed, fast setting cement will be placed flush with adjacent floors.

The Result

A view of the floor system matrix, including all surfaces above structural slab used to determine preparation and replacement steps.



Our floors are built to last

Our floors are built to last

The Cornerstone Flooring Difference

Our team of professionally trained technical experts and installers offer an unmatched level of quality and support to our Clients. We can do the same for you, reach out to us today!



Our floors are built to last

Our floors are built to last

Dan Hess, Founder, Cornerstone Flooring

Cornerstone Flooring started with three guiding principles in mind. First, to be an innovator and leader in the industrial flooring industry. Second, to create jobs for intelligent, hard-working experts in our field. And third, to operate with integrity, both within our team and in every job we complete. For nearly 33 years, I know we have accomplished all three.

Through cutting-edge research and development, our employees have engineered the finest flooring systems on the market to date, and we are endlessly looking for ways to improve on our already industry-leading standards.

The people who represent Cornerstone® were chosen because of their skills and demeanor, and because they best represent the Cornerstone® family and brand. I believe in our products, but most importantly, I believe in our people. I take pride in the knowledge that, just as our employees continue making Cornerstone® the best industrial flooring company in the market, we continue to create jobs for honest, dedicated professionals.

Cornerstone's integrity depends on both our product and our people. We are an honest, hard-working team who backs a product we believe in, and one that you can depend on.

Our commitment to excellence, and to our customers, makes Cornerstone® a final destination in the industrial flooring industry. As always, thank you for choosing Cornerstone Flooring. We appreciate your business and look forward to serving your future flooring needs.



Cornerstone Flooring, 8781 Motorsports Way, Brownsburg, IN 46112 USA
Phone 1.800.659.7699 | Fax 1.317.852.6433 | info@cornerstoneflooring.com