

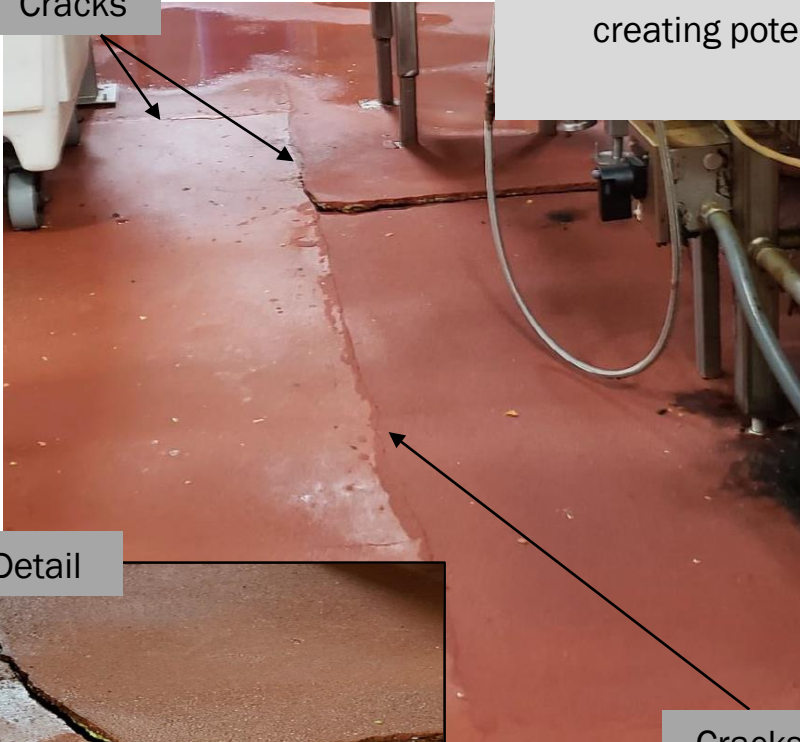
## Common Flooring Problems Observed by Cornerstone Flooring at various Plant Audits



## Problem: Floor Toppings that are delaminating

Examples of existing flooring toppings that are cracking and delaminating, creating potential harborage points.

Cracks



Detail

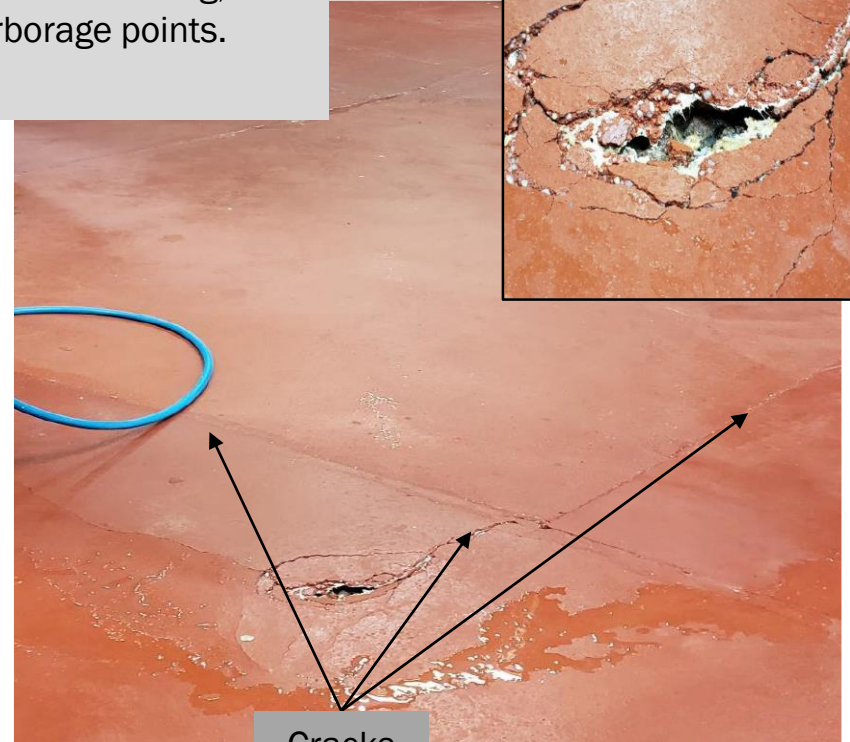


Cracks

Detail

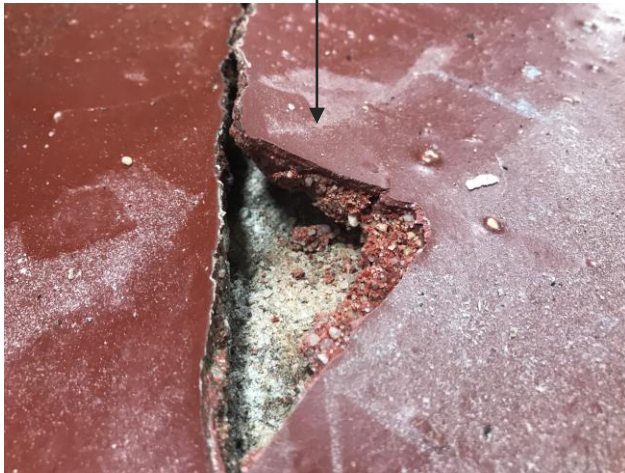


Cracks



## Problem: Floor Toppings that are delaminating

Additional examples of existing flooring toppings that are cracking and delaminating, creating potential harborage points.

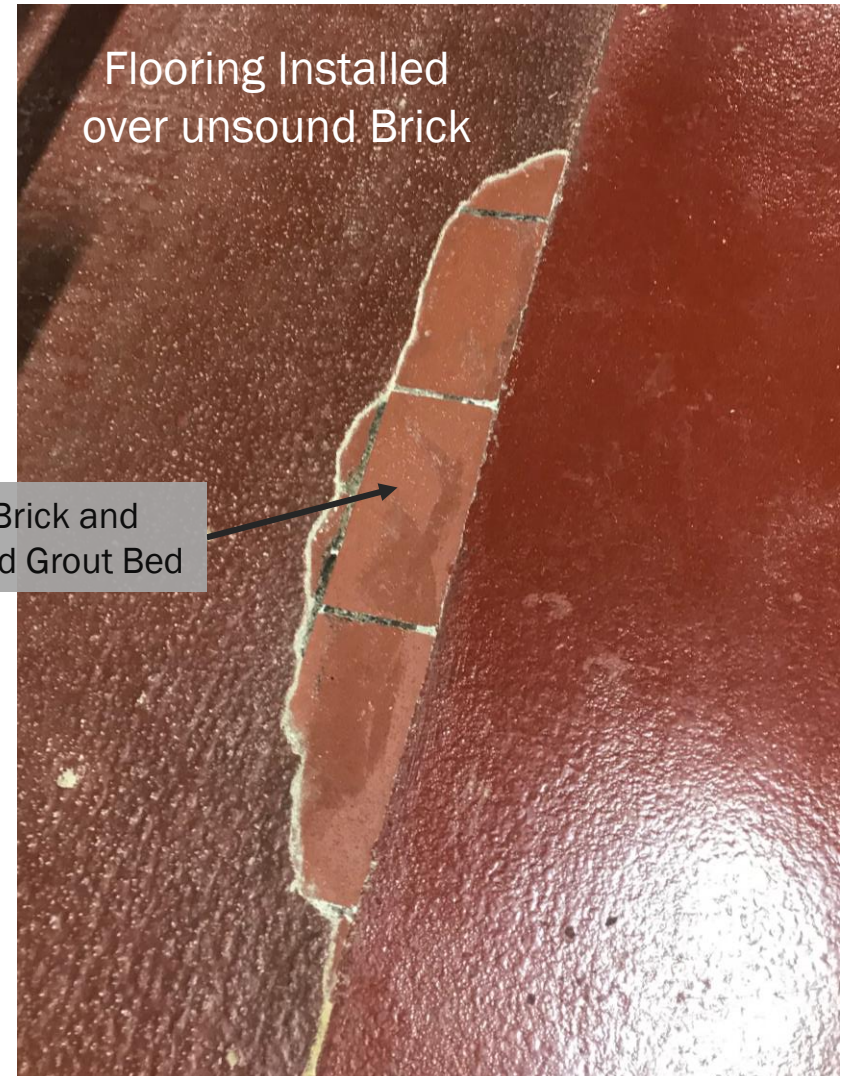




## Problem: Unsound Brick and Contaminated Grout Bed



Unsound Brick and  
Contaminated Grout Bed

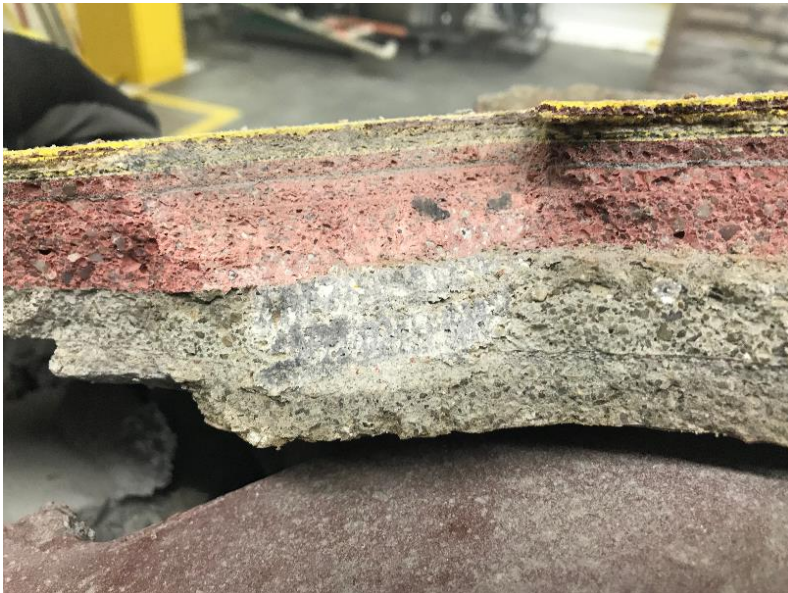


Flooring Installed  
over unsound Brick



Problem: Installing a new floor over an existing one.

Evidence of multiple layers  
of epoxy floors failing.





## Your Single Source Flooring Solution: Common Problems

It is important to remove existing floors to the structural slab.



Installing a new floor over an existing, failing floor only creates another layer of floor with a short life.



Concrete floors absorb moisture and contaminants, harbor bacteria.



Evidence of multiple layers of epoxy floors failing.

Problem: Installing a new floor over an existing one.



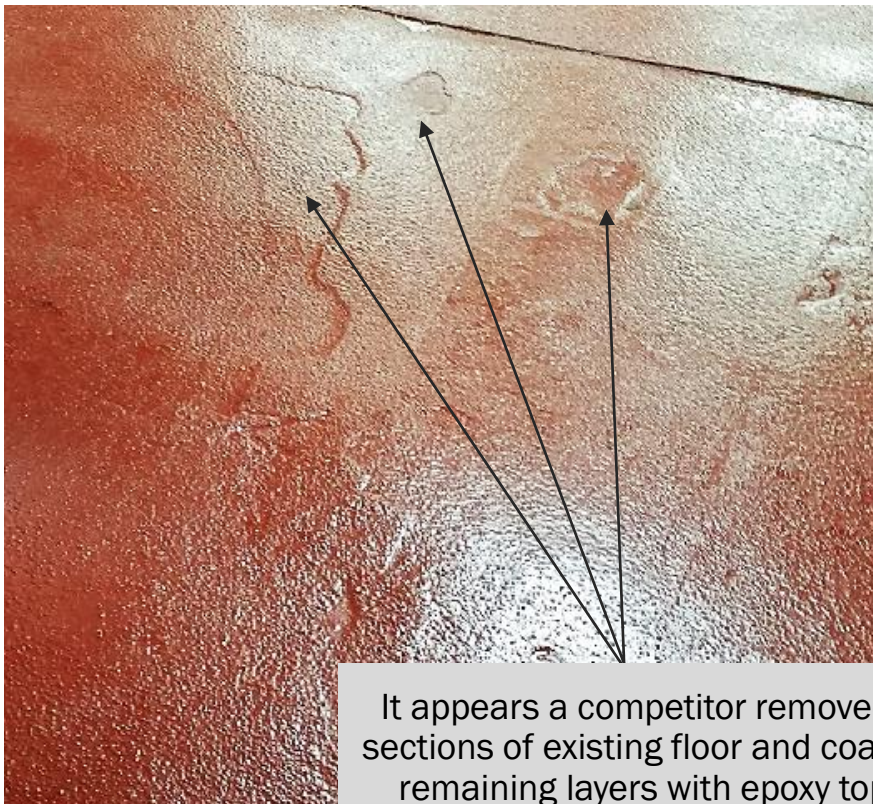
Evidence of mold and bacteria growing in between layers of epoxy flooring that a competitor installed.





## Problem: Installing a new floor over an existing one.

Epoxy coating is delaminating from the substrate. Many of Cornerstone's competitors continue to apply an epoxy topcoat over cementitious urethanes.



It appears a competitor removed loose sections of existing floor and coated over remaining layers with epoxy topcoat.



## Problem: Moisture Vapor Transmission

Domes – existing flooring lacks permeability to handle moisture vapor transmission from the concrete.



## Problem: Moisture Vapor Transmission



High alkalinity due to moisture vapor transmission from the concrete. This is attacking the epoxy, creating these domes.

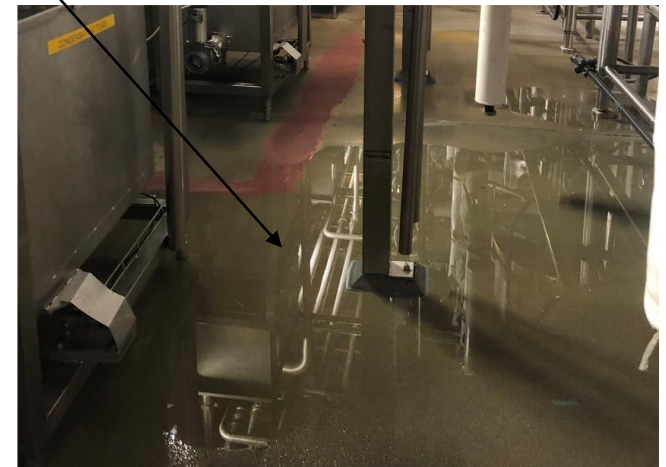
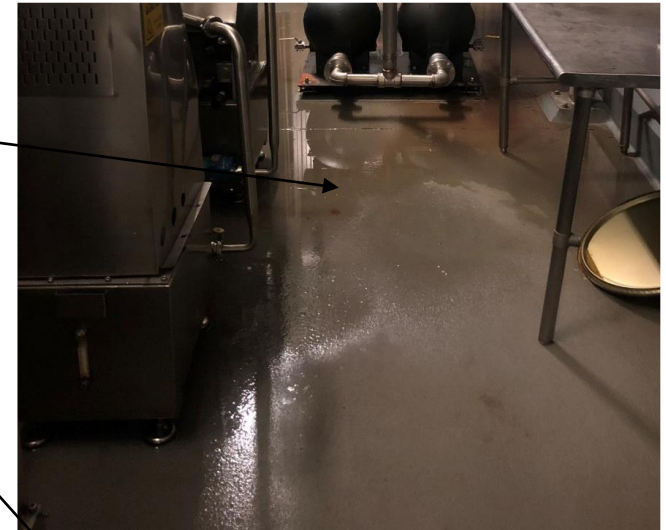
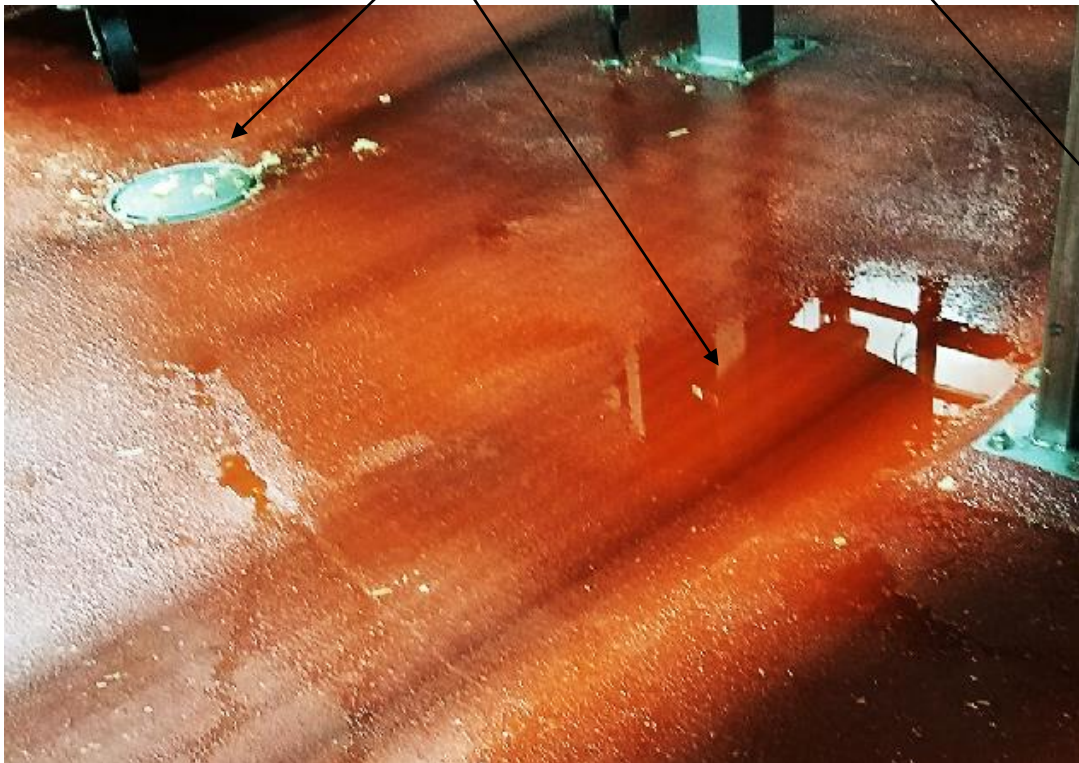
High alkalinity due to moisture vapor transmission from the concrete. This is attacking the epoxy. pH is 13+ as shown.





## Problem: Inadequate Sloping to Drains

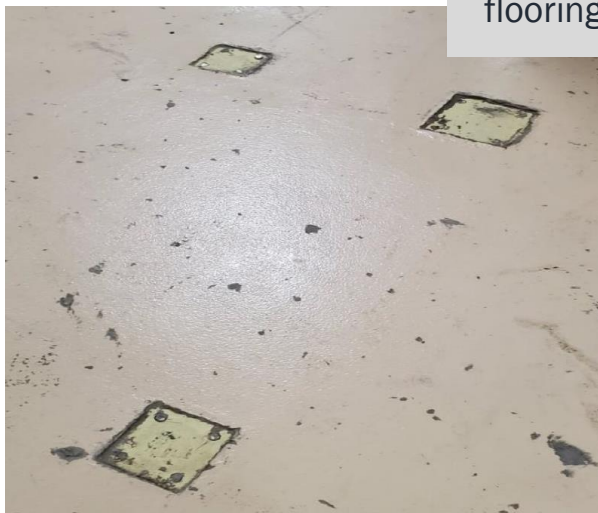
Inadequate sloping to drain causes pooling and areas of standing water on floors which can harbor bacteria.



## Problem: Old equipment was removed, Floors and Walls



Old equipment  
removed from  
flooring and walls.





## Your Single Source Flooring Solution: Walls

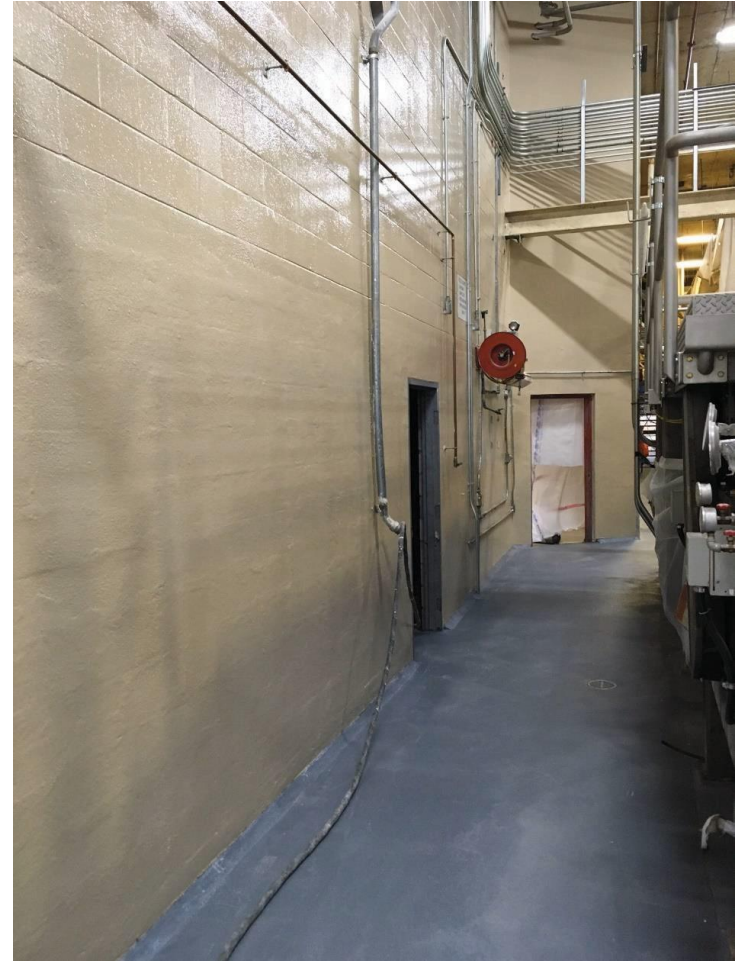
BEFORE



Detail



AFTER



## Additional Problem: Failing Drains



Failure in drains  
allowing contaminants  
to leak into substrate.



## Your Single Source Flooring Solution

### Cornerstone Flooring

Approaching 30 years of Business

The largest single source manufacturer and installer of high-performance resinous flooring and wall systems in the US.

5 Year Cornerstone Warranty on Labor & Materials

Single Source Advantage

### Our Employees

We do not use Subcontractors

All Cornerstone workers are minimum 10 hour OSHA trained and all Foremen and Project Managers are 30 hour OSHA certified.

Cornerstone owns and operates dozens of trucks/ trailers fully equipped with all equipment necessary to install resinous flooring in the US and capable of mobilizing within 24 hours.

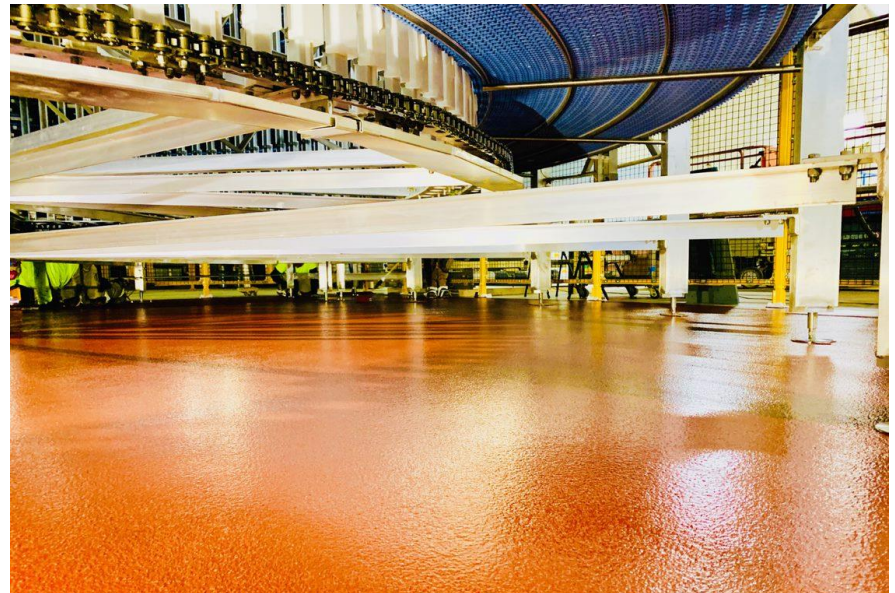
### Antimicrobial Properties

Custom formulated Anti-Microbial Flooring and Wall Solutions

### Flooring Surveys/Audits

Cornerstone Flooring will provide a survey/audit of your existing flooring and walls and provide recommendations for a plan of action for future flooring and wall needs.

For more information or questions on any Cornerstone Flooring product, please contact us at 1.800.659.7699.



Your Single Source Flooring Solution

# Cornerstone Plant Visit

## The Cornerstone team

A 3-6 person crew trained in FSMA standards

## What we need on-site

Camera pass, Access to production areas, Power & Water Source if taking a core (see Coring Procedure Overview)

## Our Equipment

Always – PPE

Likely – Coring Machine, Camera, Measuring Equipment, Floor Inspection Equipment, Relevant Documents

## Plant Visit Purpose

Utilizing plant illustrations provided by customer, Cornerstone will create a dashboard document and mapping.

Plant floors and walls will be evaluated, measured and photographed. Budget pricing will be provided to allow for future planning.



**To request a Survey/Audit please contact us at 1.800.659.7699**



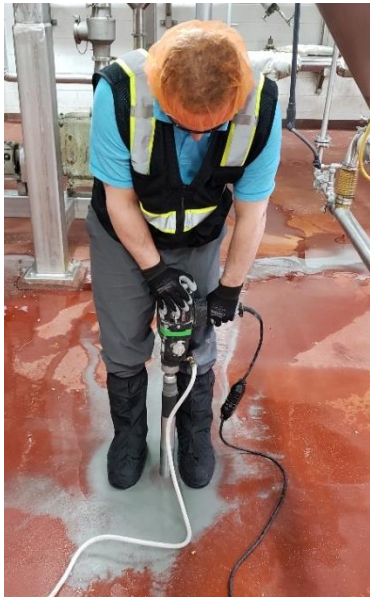
Your Single Source Flooring Solution

# Cornerstone Plant Visit

## Coring procedure overview

Coring will be completed by trained Cornerstone personnel that will comply with PPE and food safety protocol.

The Cornerstone team will work in conjunction with plant personnel to locate areas that appear to need remediation in order to comply with FSMA Standards.



## The Coring Process

The core machine is designed to connect to a water supply to ensure no dust will be created from the coring process. After the core is removed, fast setting cement will be placed flush with adjacent floors.



## The Result

A view of the floor system matrix, including all surfaces above structural slab used to determine preparation and replacement steps.

To request a Survey/Audit please contact us at **1.800.659.7699**